



# 2020 ANNUAL REPORT



**EMBRACE**  
ALABAMA KIDS



**EMBRACE**  
FLORIDA KIDS

MINISTRIES OF UMCH

## NAVIGATING A YEAR OF UNCERTAINTY



As I reflect on the challenges of 2020 and look forward to what lies ahead of us in 2021, I am inspired by the creativity, ingenuity, and diligence of the Embrace Florida Kids community. As there was no precedent for the obstacles of the past year, the learning curve has been steep. We spent a large portion of 2020 finding ways to provide effective service delivery while making changes to ensure the safety of everyone. Our staff and foster parents, as well as the children and families we serve, quickly developed the technological skills to meet with one another, provide support to our families, and help our students attend school.

As the year went on and we adjusted to a greater reliance on technology and the necessity of limiting face-to-face contact, we were interrupted by wildfires, hurricanes, and damaged bridges. Once again, we had to figure out new ways to ensure everyone's safety. I am proud to say that while weathering natural disasters during a pandemic, our staff and supporters never lost focus on our mission.

Considering the magnitude of the disruptions to our lives, it would have been reasonable to lower expectations, but no one did. Instead, we excelled. Embrace Florida Kids served more people in 2020 than in 2019, added new foster families, increased our capacity to serve the vulnerable in our Family Preservation program, maintained our high level of success, and continued to be supported by caring people recognizing our needs and making gracious donations.

I have no doubt the spirit of innovation and openness to new ideas, combined with the support of our partners within the community, will enable us to continue to grow and strengthen our ability to serve those in need. I am filled with hope, and I thank our supporters for their faith and continued generosity, I thank our staff and foster families for their fortitude and dedication, and I thank the children and families we serve for continuing to trust us.

In response to God's Word, we embrace and nurture vulnerable children and families by providing homes, healing, and hope.



Kristin Alberda, MSW, LICSW  
Executive Director



## OUR PROGRAMS

### EMBRACE MILTON GIRLS HOME

This home offers a safe haven for girls experiencing trauma. We serve these young women by offering stability and access to a nurturing and caring staff who encourage growth and development through mentoring, academic accountability, and spiritual care.



### FAMILY PRESERVATION

This program aims to restore families who are at risk of losing their children by identifying areas of improvement and working toward restoration. Our intensive in-home treatment equips them with the skills necessary to handle challenges in a healthy way and provide safe, loving homes.



### FOSTER CARE

Our team recruits, trains, licenses, and supports foster parents in Northwest Florida, providing a variety of resources that prepare and equip foster families for success. Additionally, we place children in loving foster homes while continually supervising their care to ensure their safety and wellbeing is maintained.

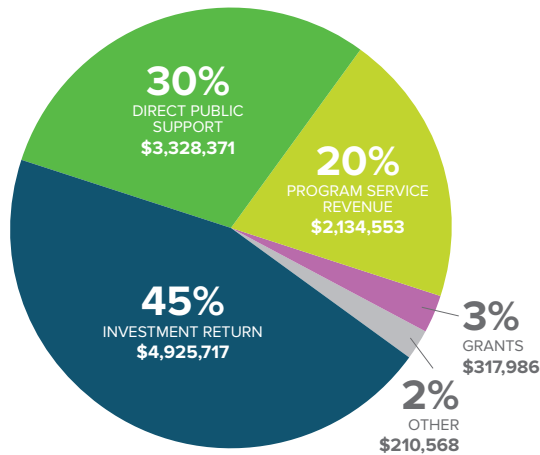
### EMBRACE TEEN CENTER

This center serves youth in foster care as well as foster parents in Okaloosa County, Florida. Services include tutoring sessions, study skills training, interview training, career fairs, and programs that help with social skills. Students also receive assistance with resumes, job applications, and dressing for success. All foster parents and caregivers have access to a clothes closet, supply room, and food pantry to help offset expenses.

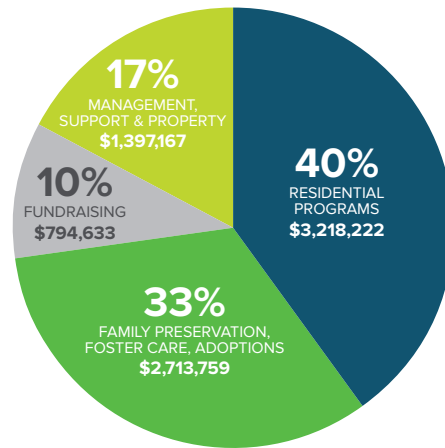


5414 Highway 90 • Pace, FL 32571

## TOTAL REVENUE \$10,917,195



## TOTAL EXPENSES \$8,123,781



## CARING FOR KIDS DURING A PANDEMIC

We spent a large portion of 2020 finding ways to provide effective service delivery while making changes to ensure the safety of everyone. Our staff and foster parents, as well as the children and families we serve, quickly developed the technological skills to meet with one another, provide support to our families, and help our students attend school.



**\$15,341**

spent on personal protective equipment to prevent COVID spread

**25,000**

additional meals served in all programs due to school/daycare closings and virtual school



**800**

virtual meetings held to aid in social distancing

**181**

youth supported in a virtual school setting

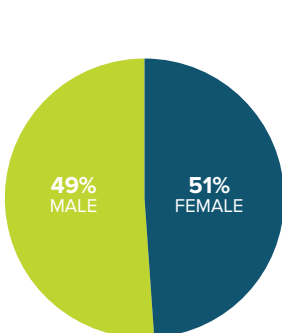


**70**

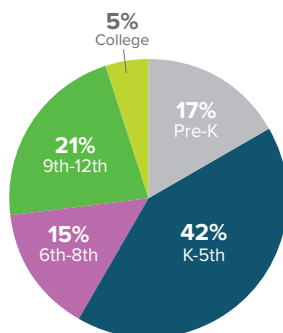
computers purchased for staff and youth

## 2020 BY THE NUMBERS

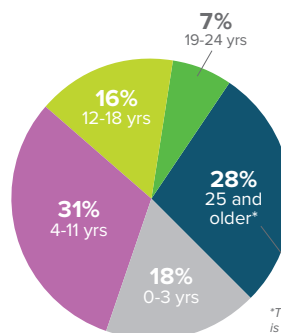
We serve vulnerable children and at-risk families across the state through a diverse network of ministry programs with the goal of providing them with homes, healing, and hope. We provide residential group homes, foster care, family preservation, and other programs to minister to babies, children, youth, college-age teens, and parents. While our ministry programs are diverse in their approach, they all focus on providing safe havens for children in need of love and support.



GENDER

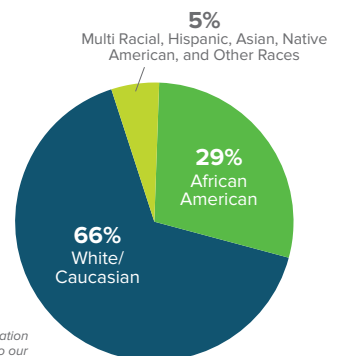


EDUCATION



AGE

\*This adult population is primarily due to our Family Preservation Program



RACE

## HOMES

Last year, we served approximately 200 more individuals than in the previous year, and we added Mary Ellen's Hearth, a program that helps homeless mothers with children transition into independence. To say we're excited about what God has been up to is an understatement!

1,712

babies, children,  
teens, young adults,  
and parents served



24,251

days of care delivered to  
167 youth in residential  
group homes, providing  
food, clothing, counseling,  
nurturing, and guidance

23,844

days of foster care  
provided for 172 children  
and youth while training  
and supporting 108  
foster families



25,353

meals served in  
residential group  
homes

98,550

diapers purchased

## HEALING

Our staff members are dedicated to their jobs because they know the children they care for each day need healing. Despite the challenges of the pandemic and the threat to their personal health, they didn't skip a beat, and our ministry experienced very few staffing difficulties because of their dedication.



653

individualized service  
plans offering healing  
and hope

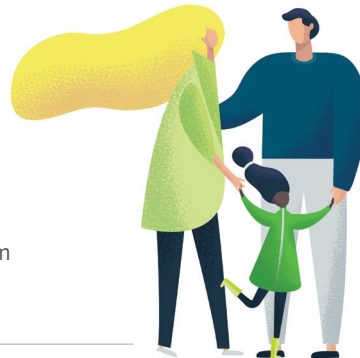
246

homes restored that  
were previously  
at risk of having  
children removed



948

family members  
served in our family  
preservation program



74

program staff who  
provide care and  
mentoring for  
children, youth, and  
at-risk families

## HOPE

In 2020, Embrace Alabama Kids expanded its Parents as Teachers (PAT) curriculum to Mobile and Dothan. Ministry staff members were already serving vulnerable children and families in these areas, and PAT, paired with other parenting curricula, is a natural fit for the existing programs in both locations.

5,091

days of stability and  
care for 24 college  
students impacted by  
foster care or unstable  
living environments



37

parent education home  
visits to help families  
prepare children for  
kindergarten

23

forever homes found  
for children and youth



71

homeless mothers and  
children transitioning to  
independence

## PROGRAM MAP

### EMBRACE ALABAMA KIDS



1. Andalusia, AL
2. Auburn, AL
3. Birmingham, AL
4. Dothan, AL
5. Florence, AL
6. Headland, AL
7. Mobile, AL
8. Montgomery, AL
9. Tuscaloosa, AL

Family Preservation Program, Foster Care Program, Parents as Teachers Program  
Adoption Services  
Overton Home, External Affairs Office  
Family Preservation Program, Foster Care Program, Parents as Teachers Program  
Higher Education Home  
Settlement Youth Boys Home, Transitional Living Program  
Babies First Home, Transitional Living Program, Parents as Teachers Program  
Mary Ellen's Hearth, Program Support Center  
Higher Education Home, Foster Care Program, Independent Living Program



### EMBRACE FLORIDA KIDS



10. Santa Rosa Beach, FL
11. Crestview, FL
12. Milton, FL
13. Pace, FL

External Affairs  
Teen Center, Foster Care Program, Family Preservation Program  
Milton Girls Home, Foster Care Program, Family Preservation Program  
Foster Care Program, Family Preservation Program



Since 1890, our ministry has been loving children back to wholeness. By making a planned gift and including our ministry in your will, you can become a member of the 1890 Society and help ensure that the ministry will be here for hurting children and youth for generations to come. For more information or to notify us that Embrace Alabama Kids or Embrace Florida Kids is already in your estate plans, please contact Rebecca Morris at [rebecca.morris@letsembracekids.org](mailto:rebecca.morris@letsembracekids.org) or 205.837.0141, or reach Dr. K. Blake Horne at [blake.horne@letsembracekids.org](mailto:blake.horne@letsembracekids.org) or 334.387.2112.



## BOARD OF DIRECTORS

### ALABAMA

**Charlie Adair, Chair**  
Tuscaloosa, AL  
**Glenda Allred, Past Chair**  
Montgomery, AL  
**Warren Matthews, Vice-Chair**  
Greenville, AL  
**Lisa Free, Secretary/Treasurer**  
Montgomery, AL  
**Dr. Judy Bonner**  
Point Clear, AL  
**Wesley Britt**  
Montgomery, AL  
**Kim Bullard**  
Montgomery, AL

**Mark Colson**  
Montgomery, AL

**Anna Comer**  
Birmingham, AL

**Greg Crouch**  
Santa Rosa Beach, FL

**Jeannie Dodson**  
Birmingham, AL

**Bishop David Graves**  
Montgomery, AL

**John Hemmings**  
Montgomery, AL

**Jerry Maygarden**  
Pensacola, FL

**Andrea McCain**  
Montgomery, AL

**Brad Norris**  
Pike Road, AL

**Rev. Patrick Quinn**  
Montgomery, AL

**Jonathan Ratliff**  
Birmingham, AL

**Ed Reifenberg**  
Montgomery, AL

**Mark Saliba, Past Chair**  
Dothan, AL

**Mark Snead**  
Montgomery, AL

**Debby Spain**  
Birmingham, AL

**Steve Umphrey**  
Vestavia, AL

**Bishop Debbie Wallace-Padgett**  
Birmingham, AL

### FLORIDA

**Jerry Maygarden, Board President**  
Pensacola, FL

**Greg Crouch**  
Santa Rosa Beach, FL

**Jeff Dannelly**  
Niceville, FL

**Patricia Bullock Franklin**  
Pensacola, FL

**Kimberly Stagner**  
Gulf Breeze, FL

**Kirby Williams**  
Santa Rosa Beach, FL

## LEADERSHIP

### ALABAMA

**K. Blake Horne, Ph.D.**  
President/CEO

**Kristin Alberda, MSW, LICSW**  
Sr. Vice President of Operations

**Amanda S. Freeman, CPA, GGMA**  
Chief Financial Officer

**Rebecca Morris**  
Sr. Vice President of External Affairs

### FLORIDA

**K. Blake Horne, Ph.D.**  
President

**Kristin Alberda, MSW, LICSW**  
Executive Director

**Ramsey Lawrence**  
Development Director

**Charlotte Thomas**  
Director of Programs