

# 2021 ANNUAL REPORT



**EMBRACE**  
ALABAMA KIDS



**EMBRACE**  
FLORIDA KIDS

MINISTRIES OF UMCH

## HOMES

Last year, our ministry saw an 83% increase in the number of individuals we served through our residential homes in Alabama and Florida, and a 40% increase in the number of days that we provided care in these homes. Throughout all of our ministries, we served 20% more vulnerable children and families in 2021 than in 2020, and 37% more than the previous 4-year average.

**2,050**

babies, children, teens, young adults, and parents served in all homes and programs



**33,854**

days of care delivered to 304 individuals in residential group homes, providing food, clothing, counseling, nurturing, and guidance

**21,061**

days of foster care provided for 137 children and youth while training and supporting 108 foster families



**101,562**

meals served in residential group homes

**50,455**

diapers purchased for our Residential and Foster Care programs

## HEALING

Our staff members are dedicated to their jobs because they know the children they care for each day need healing. Despite the challenges of the pandemic and its effects on their personal lives, they have kept remarkably positive attitudes that we attribute to their mission-mindedness. The work carried out each day in our ministry is more than just a paycheck, it's a calling.



**782**

individualized service plans offering healing and hope

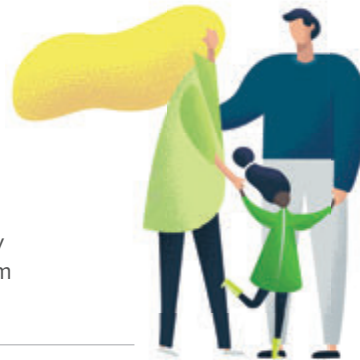
**256**

families restored who were previously at risk of having children removed



**1,083**

family members served in our Family Preservation program



**74**

program staff who provide care and mentoring for children, youth, and at-risk families

## HOPE

While providing a safe haven for abused and neglected children has always been our primary goal, we continue to work to expand on it by providing various support services. In 2021, we expanded our Family Preservation program to North Alabama, took initial steps to start a Higher Education program in Florida while expanding our existing program in Alabama, and significantly grew our Parents as Teachers program in South Alabama. None of these developments would be possible without the generosity, prayers, and support of churches and donors.

**7,437**

days of stability and care for 25 college students impacted by foster care or unstable living environments



**28**

families received help preparing their children for kindergarten

**25**

college students affected by foster care and alternative living who are receiving housing, mentoring, and support



**209**

mothers and children who have experienced homelessness transitioning to independence

**630**

churches praying for and supporting those served by our ministries



## LETTING KIDS BE KIDS

One of the goals of our ministry involves helping children feel lovable and worthwhile. We often see children in our care who haven't been allowed to enjoy the joys of childhood due to the abuse and neglect that has overshadowed their childhood experience. We believe that providing fun activities for them to engage in allows them to bond with their peers and caretakers, creating a positive environment in which there is room for them to experience love and worth.



**20**

kids in our North AL and South AL Foster Care programs visited the Montgomery Zoo

**15**

kids and youth who arrived in a limo to attend our Valentine's Banquet hosted by the Tuscaloosa Foster Care program



**1,000**

bags of candy were given to kids who attended a fall festival hosted by program staff

**50**

s'mores consumed at an overnight "lock-in" where kids made crafts, played games, and watched movies until the sun came up.

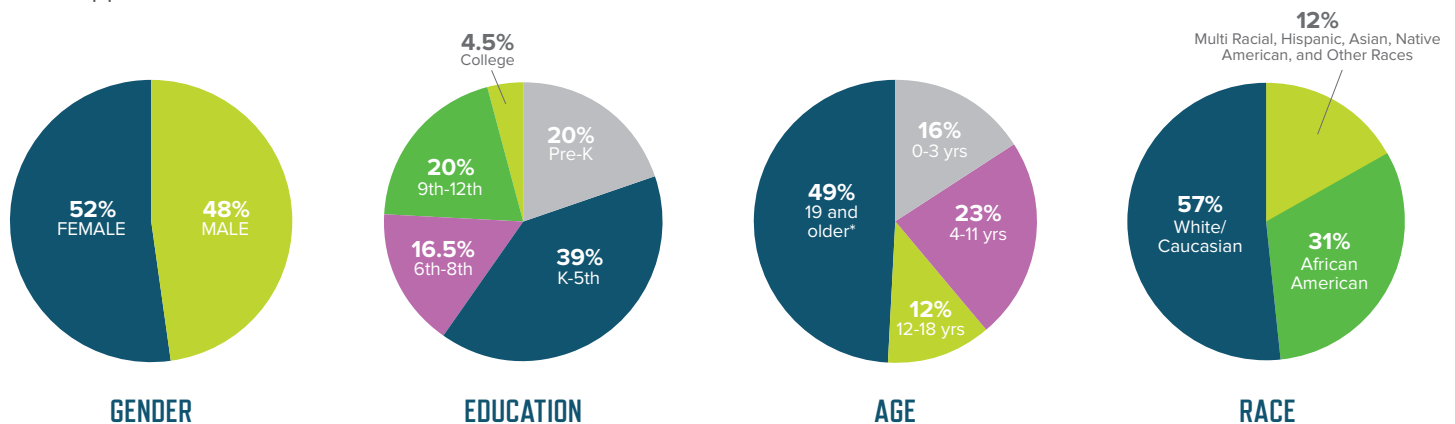


**15**

teens were hosted by Bama Athletics to play ball with the basketball team and tour the football facility

## 2021 BY THE NUMBERS

We serve vulnerable children and at-risk families across the state through a diverse network of ministry programs with the goal of providing them with homes, healing, and hope. We provide residential group homes, foster care, family preservation, and other programs to minister to babies, children, youth, college-age teens, and parents. While our ministry programs are diverse in their approach, they all focus on providing safe havens for children in need of love and support.



# PROGRAM MAP

## EMBRACE ALABAMA KIDS



- |               |   |
|---------------|---|
| 1. Andalusia  | Family Preservation Program, Foster Care Program, Parents as Teachers Program                       |
| 2. Birmingham | Overton Home, External Affairs Office   |
| 3. Dothan     | Family Preservation Program, Foster Care Program, Parenting Support and Education Program           |
| 4. Florence   | Higher Education Home   |
| 5. Headland   | Settlement Youth Boys Home, Transitional Living Program   |
| 6. Mobile     | Babies First Home, Parenting Support and Education Program  |
| 7. Montgomery | Mary Ellen's Hearth, Program Support Center   |
| 8. Tuscaloosa | Family Preservation Program, Higher Education Home, Foster Care Program, Independent Living Program |



## EMBRACE FLORIDA KIDS

- |              |  |
|--------------|--|
| 9. Crestview | Foster Care Program, Family Preservation Program |
| 10. Milton   | Milton Girls Home                                |
| 11. Pace     | Foster Care Program, Family Preservation Program |



**Note:** Our residential group homes and program offices serve vulnerable children and at-risk families from multiple counties that make up a much larger service footprint than our actual physical locations.



Since 1890, our ministry has been loving children back to wholeness. By making a planned gift and including our ministry in your will, you can become a member of the 1890 Society and help ensure that the ministry will be here for hurting children and youth for generations to come. For more information or to notify us that Embrace Alabama Kids or Embrace Florida Kids is already in your estate plans, please contact Rebecca Morris at [rebecca.morris@letsembracekids.org](mailto:rebecca.morris@letsembracekids.org) or 205.837.0141, or reach Dr. K. Blake Horne at [blake.horne@letsembracekids.org](mailto:blake.horne@letsembracekids.org) or 334.387.2112.

**In response to God's Word, we embrace and nurture vulnerable children and families by providing homes, healing, and hope.**

### 2021 BOARD OF DIRECTORS

#### ALABAMA

**Charlie Adair, Chair**  
Tuscaloosa

**Warren Matthews, Vice Chair**  
Greenville

**Lisa Free, Secretary/Treasurer**  
Montgomery

**Glenda Allred, Past Chair**  
Montgomery

**Dr. Judy Bonner**  
Point Clear

**Wesley Britt**  
Montgomery

**Kim Bullard**  
Montgomery

**Mark Colson**  
Montgomery

**Anna Comer**  
Birmingham

**Greg Crouch**  
Santa Rosa Beach

**Jeannie Dodson**  
Birmingham

**Bishop David Graves**  
Montgomery

**John Hemmings**  
Montgomery

**Jerry Maygarden**  
Pensacola

**Andrea McCain**  
Montgomery

**Brad Norris**  
Pike Road

**Rev. Patrick Quinn**  
Montgomery

**Jonathan Ratliff**  
Birmingham

**Ed Reifenberg**  
Montgomery

**Mark Saliba**  
Dothan

**Mark Snead**  
Montgomery

**Debby Spain**  
Birmingham

**Steve Umphrey**  
Vestavia

**Bishop Debbie Wallace-Padgett**  
Birmingham

#### FLORIDA

**Jerry Maygarden, Chair**  
Pensacola

**Greg Crouch**  
Santa Rosa Beach

**Jeff Dannelly**  
Niceville

**Patricia Bullock Franklin**  
Pensacola

**Kimberly Stagner**  
Gulf Breeze

**Kirby Williams**  
Santa Rosa Beach

### LEADERSHIP

#### ALABAMA

**K. Blake Horne, Ph.D.**  
President/CEO

**Kristin Alberda, MSW, LICSW**  
Sr. Vice President of Operations

**Amanda S. Freeman, CPA, CGMA**  
Chief Financial Officer

**Rebecca Morris**  
Sr. Vice President of External Affairs

**Janet Rawls, LICSW**  
Vice President of Programs

#### FLORIDA

**K. Blake Horne, Ph.D.**  
President

**Kristin Alberda, MSW, LICSW**  
Executive Director

**Ramsey Lawrence**  
Development Director

**Charlotte Thomas**  
Director of Programs

#### CONTACT US:

205-837-0141  
[rebecca.morris@letsembracekids.org](mailto:rebecca.morris@letsembracekids.org)